

# Daily Weather Update

## Coastal Area Around The Sri Lanka

Information Fusion Center-Colombo

Amperice

130j-2019

100

100

100

100

100

100

100

100

100

100

100

100

100

100

100

100

100

100

100

100

100

100

100

100

100

100

100

100

100

100

100

100

100

100

100

100

08-16  
APRIL

ANLS

Kingle

Raun

Armenthite



Information Fusion Center  
Colombo  
Sri Lanka

Date 2026.04.02

**FORMATION FUSION CENTRE**

# **WEATHER FORECAST FOR SEA AREAS AROUND THE ISLAND DURING NEXT 24 HOURS**

**Issued at 05.30 a.m. on 02 April 2026**



**DEPARTMENT OF METEOROLOGY  
SRI LANKA**

**COLOMBO - SRI LANKA**

# CONDITION OF THE RAIN

Showers or thundershowers may occur at several places in the sea areas off the coast extending from Kaluthara to Batticaloa via Galle, Hambantota and Pottuvil. Showers or thundershowers may occur at a few places in the other sea areas around the island during the evening or night.

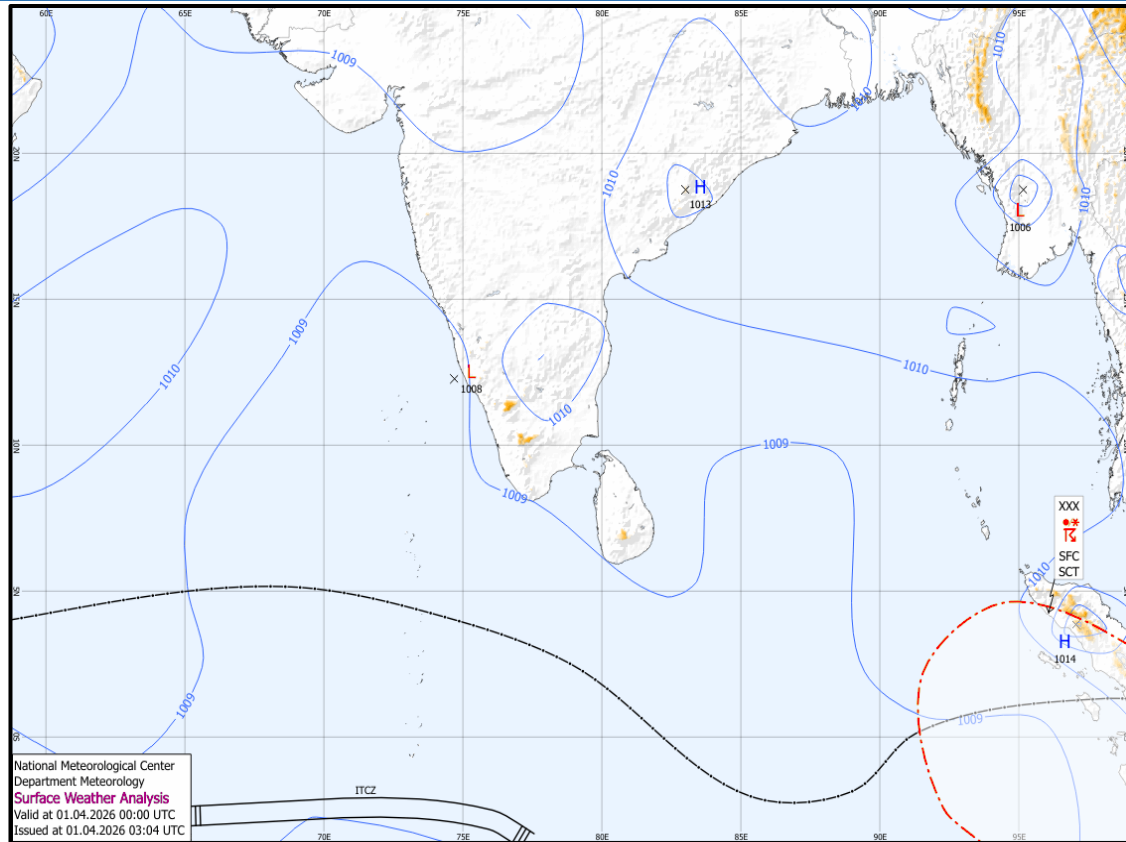
# WINDS

Winds will be variable in direction. Wind speed will be (20-30) kmph.

# STATE OF SEA

The sea areas around the island will be slight.

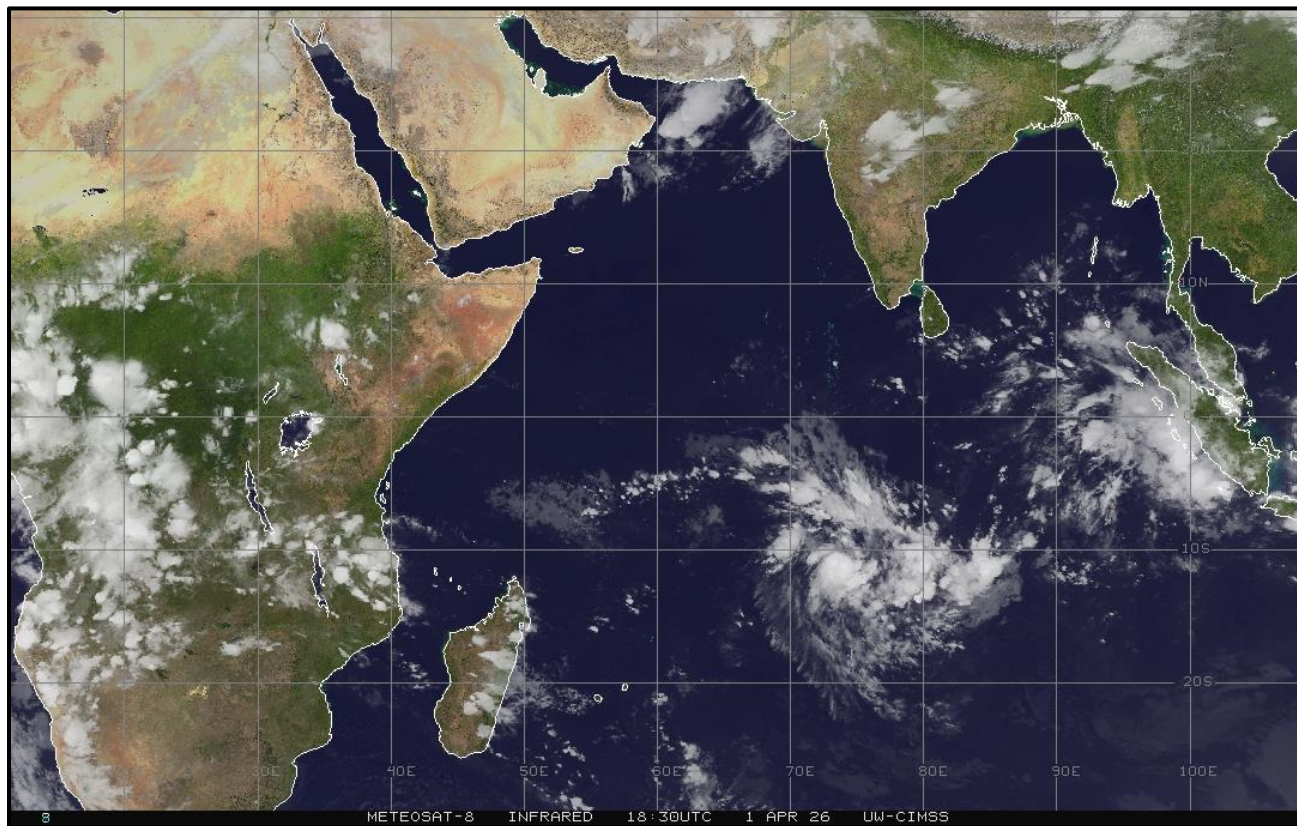
# SURFACE ANALYSIS CHART



This analysis charts show the surface pressure pattern over Sri Lanka and the surrounding area. They display isobars (lines of equal pressure) and indicate areas of high (H) and low pressure (L) along with their central pressure value. Isobars are represented by solid blue lines, spaced every 1 hPa. High pressure is usually associated with mainly dry, settled weather with light winds, while low pressure is normally associated with unsettled weather, which is often wet and windy. The lower the pressure, generally the stronger the winds and the heavier the rain.

The map shows Coordinated Universal Time (UTC) and the local time is UTC+5.30.

# SATELLITE IMAGE



02-Apr-26

IFC -Colombo



Information Fusion Center  
Colombo  
Sri Lanka

**THANK YOU**

The Officer Incharge  
Information Fusion Centre - Colombo  
Naval Headquarters, Colombo, Sri Lanka  
+94 11 719 480 6  
+94 74 120 4829  
[ifc@navy.lk](mailto:ifc@navy.lk)  
[ifc.cbo@gmail.com](mailto:ifc.cbo@gmail.com)